



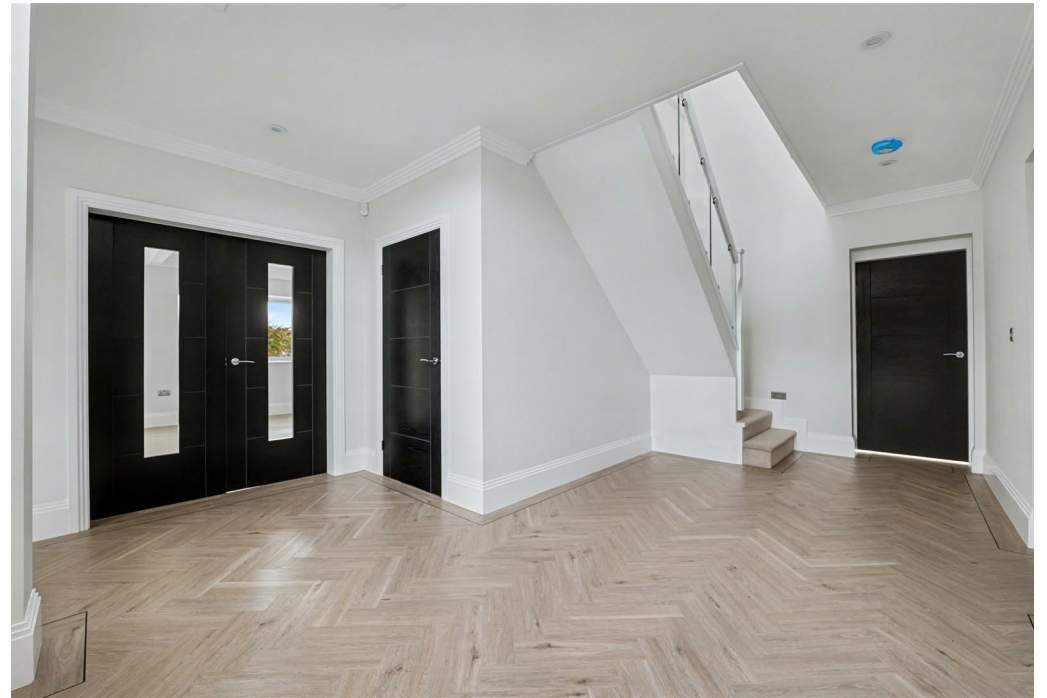
Westwood Heath Road, Coventry, CV4 8AA

Loveitts
PART OF | SHELDON BOSLEY KNIGHT

Property Description

DO NOT MISS OUT ON THIS BEAUTIFUL, PRIVATELY GATED FAMILY HOME. This home also benefits from underfloor heating to ground floor, exquisite contemporary décor and a beautifully landscaped garden. Contact us today to make an appointment to view.







Key Features

- BRAND NEW 5 BEDROOM DETACHED HOME
- TWO ENSUITE BATHROOMS
- BEAUTIFUL GALLERY LANDING
- STUDY FOR HOME WORKING
- SECURITY GATED DEVELOPMENT OF TWO NEW HOMES
- INTEGRATED APPLIANCES
- AIR SOURCE HEAT PUMPS FOR ENERGY EFFICIENCY
- SITTING ROOM AND FAMILY KITCHEN BOTH WITH BI FOLD DOORS
- DOUBLE GARAGE WITH PERSONNEL DOORS LEADING INTO THE HOUSE AND GARDEN
- SOUGHT AFTER SECLUDED LOCATION

£1,350,000